

CUPRONICKEL

ALLOY RANGE

70/30 Copper - Nickel Alloy
90/10 Copper - Nickel Alloy
95/5 Copper - Nickel Alloy



PRODUCTS

TUBES - Diameter 3mm OD to 200mm OD
Thickness - 0.01mm to 10mm
Length - upto 15mtrs

U-TUBES - Various Radius on Customer request

RODS, BAR and PROFILE - upto 200mm dia

We also supply HEXAGONAL, OCTAGONAL, etc, FULL or HOLLOW inside

STRIPS - upto 200mm Width
- upto 20mm thickness

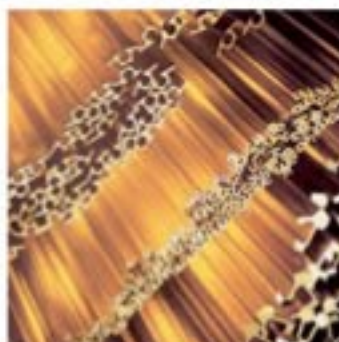
WIRES - upto 40 SWG



BRASS

ALLOY RANGE

70/30 Brass
63/37 Brass
Admiralty Brass
Alluminium Brass
Other Compositions



PRODUCTS

TUBES - Diameter 3mm OD to 150mm OD
Thickness - 0.10 to 30mm
Length upto 15 Mtrs

RODS - upto 200mm diameter

STRIPS/SECTIONS - As per Client requirement



COPPER

RANGE OF COPPER

DHP Copper
ETP Copper
OFHC Copper
SILVER BEARING Copper



PRODUCTS

TUBES Diameter - 4mm OD to 200mm OD
Wall thickness - 0.10 to 30mm
Length upto - 15mtrs

RODS - upto 200 mm dia

STRIPS - upto 200mm Width
- upto 20mm thickness

WIRES - upto 40 SWG



SUPER ENAMELED COPPER WIRE - 12 SWG to 36 SWG
(Polyster, F Class, H Class, Dual Coated, Self Solderable)

SUBMERCIBLE COPPER WIRE - Sizes - 0.9mm, 1.0mm, 1.1mm

